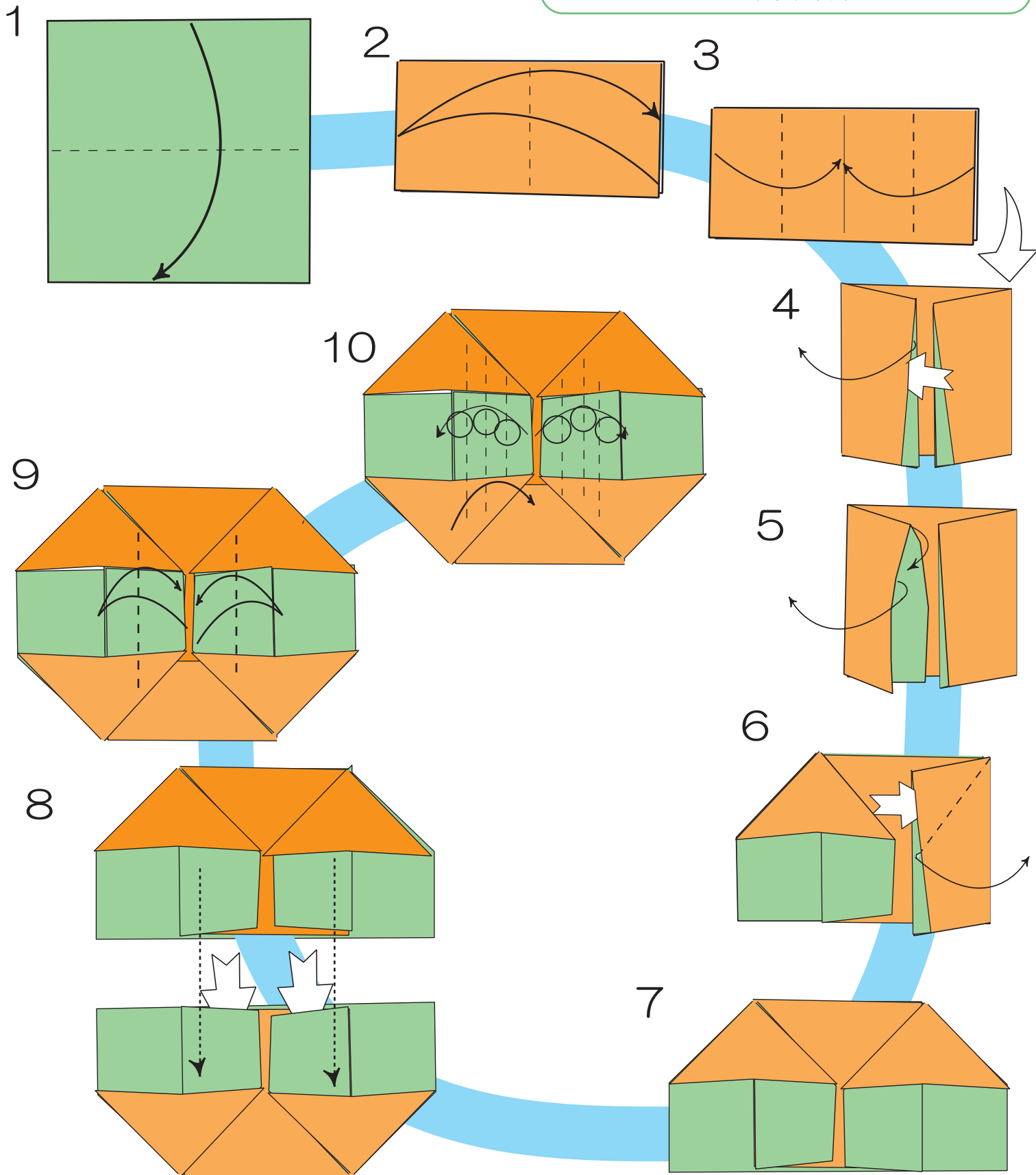


# Easy Burger

Created by Shoko Aoyagi  
Diagrams by Shoko Aoyagi

©Shoko Aoyagi October 2006

両面おりがみ 2枚  
(茶/緑)



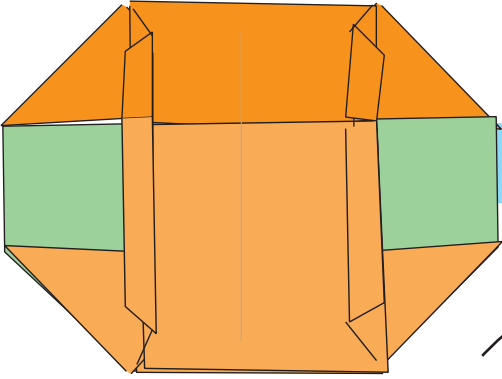
おうちの出来上がり。もう一つ作ろう。

# Easy Burger

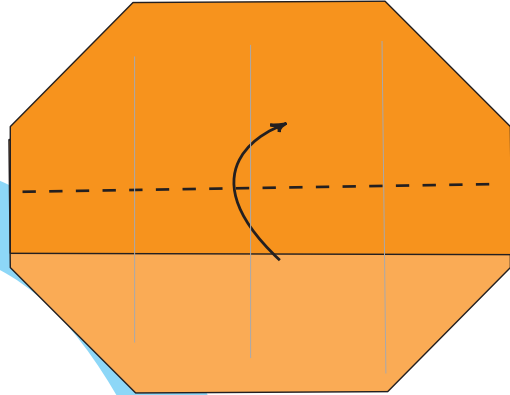
Created by Shoko Aoyagi  
Diagrams by Shoko Aoyagi

©Shoko Aoyagi October 2006

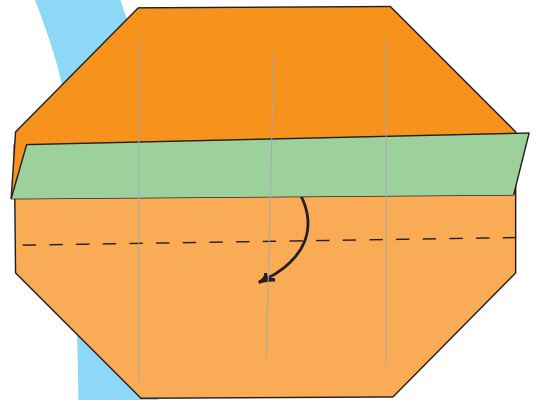
11



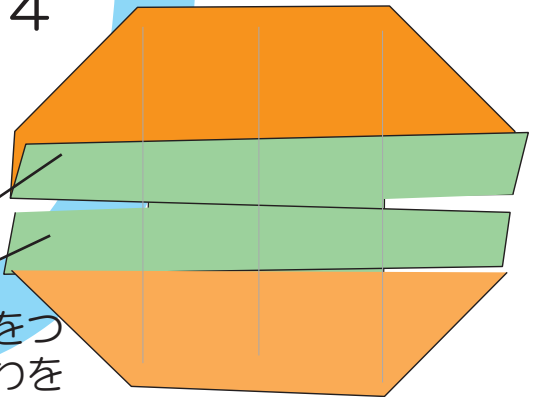
12



13



14

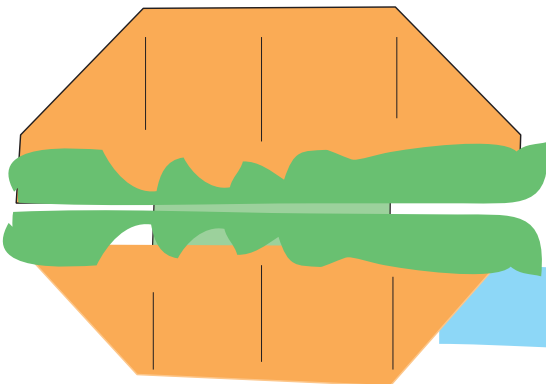


この緑の部分をつまみながらしわを寄せて、レタスのようにする。

赤と黄色の両面折り紙で折、パンを半分に後ろに折れば、ホットドック?

①

②



出来上がり。  
fast foodです。