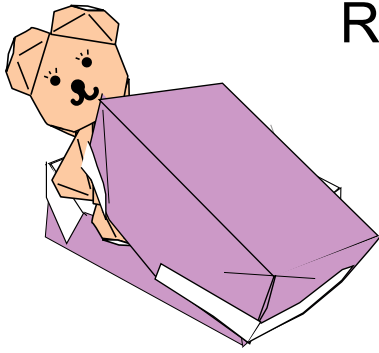


Rectangular Box (traditional)

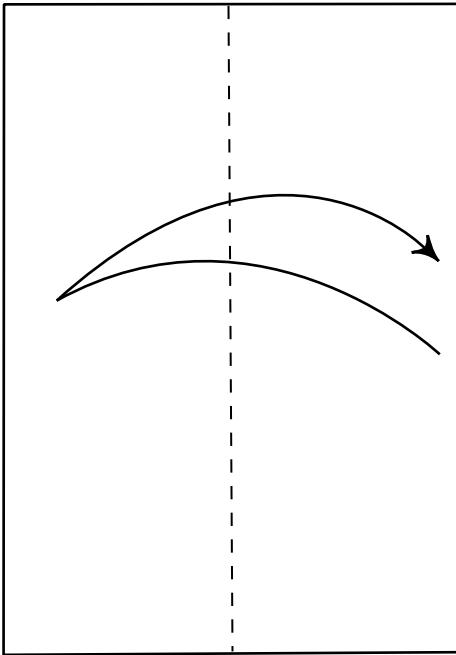
1/2



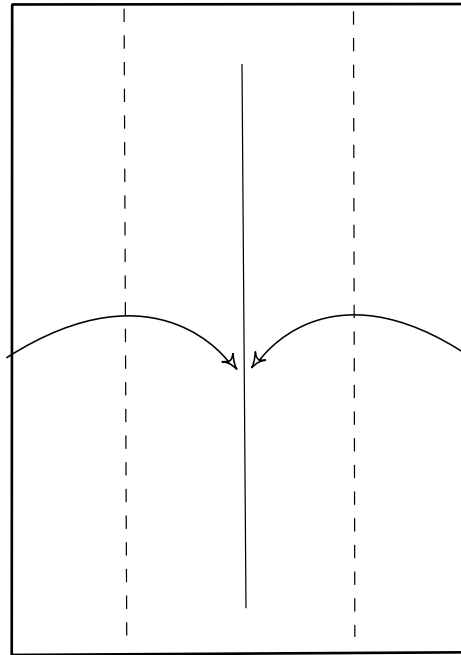
© Shoko Aoyagi

You need 2 sheets of rectangular paper.
Copy paper will do.
(Recycle :Use the front and back covers of magazine.)

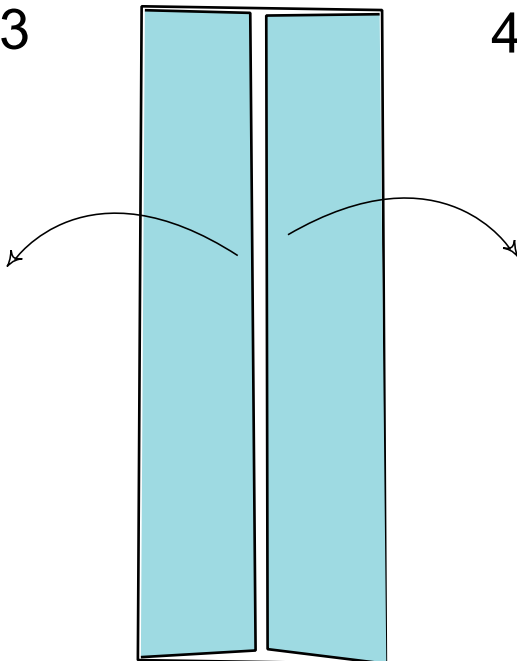
1



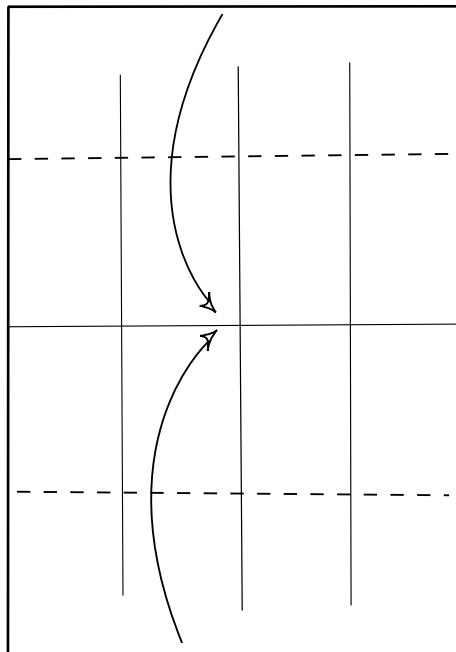
2



3



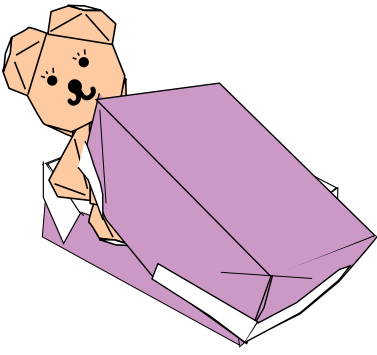
4



Unfold.

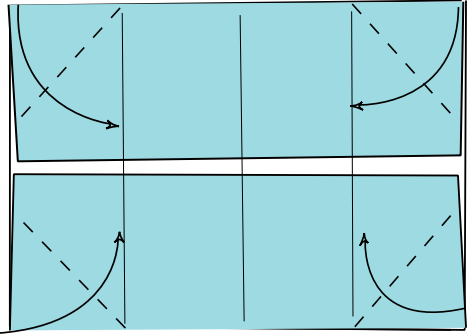
Rectangular Box (traditional)

2/2

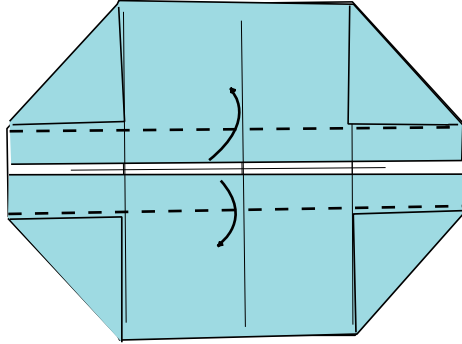


© Shoko Aoyagi

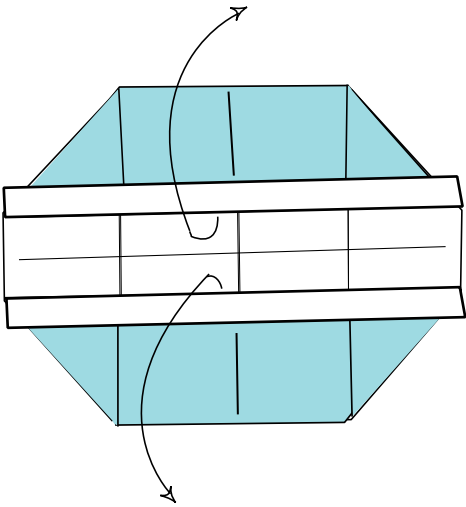
5



6

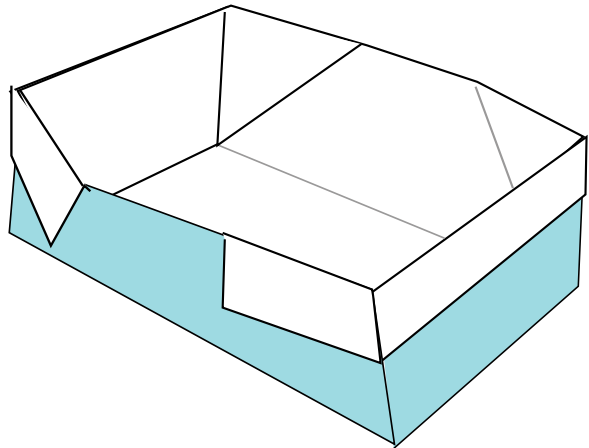


7



Place a thumb under each of the rectangular borders and pull them apart.

8



Well done !
Here is the box.
Make another for a lid.